

erqsome knits

in paris

These fingerless mitts were designed in honour of Katia and Kyliemac's 200th episode. From the sophistication of red and black colourwork and the button fastening of the thumb strap, to the mirrored motif which allows for instant hit of K&K whichever way you look, these mitts capture the delicate nuances and particular subtleties the girls bring us in each and every podcast. They even come with their own K&K: the sleek ladder that graces one side of the wrist slips askew on the other. But I wouldn't have them any other way.

Bemitted, I raise my glass and declare a toast! To Katia and Kyliemac, in Paris.

size:

to fit average women's hand

finished**measurements:**

wrist circumference:

6 3/8 inches

hand circumference:

8 1/2 inches

materials:

yarn: MC 1 skein
Elsebeth Lavold Silky
Wool (45% wool, 35%
silk, 20% nylon;
192 yds/50 g); CC
1 skein Koigu Premium
Merino (100% merino;
175 yds/50 g)

needles: 2.5 mm DPNs,
set of 5

notions: tapestry
needle; sewing needle
and thread; two
glorious buttons

gauge:

14.5 sts/2 in. over st st



erqsome knits

hemmed cuff

In CC, CO 52 sts and join in the round. Arrange so there are 26 sts on needle 1 and 26 sts over needles 2 and 3 (13 on each). Work 12 rounds in st st.

Next round (using spare needle): * [pick up the horizontal strand from the back of the cast-on edge and place it on the left needle, k2tog with the next st], k1, repeat from * to end

Switch to MC, work 8 rounds in st st.

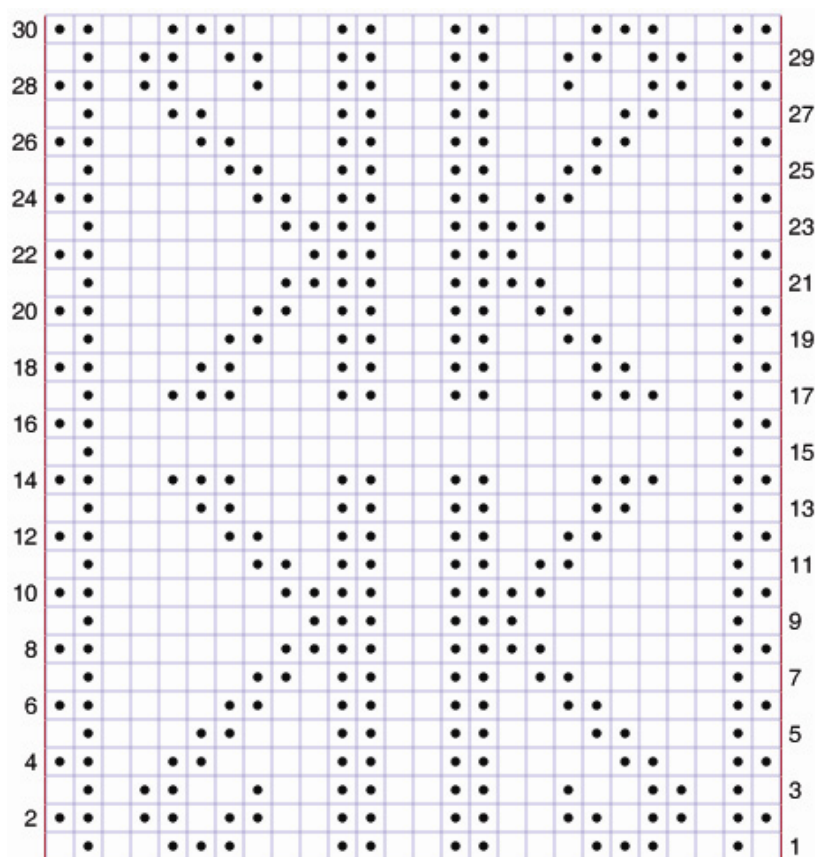
Next round (using spare needle): * [pick up horizontal bar from back of first MC round and place it on the left needle, k2tog with the next st], k1, repeat from * to end

Next two rounds (in MC): k all sts

wrist

Note: As with all colourwork, this is best done as loosely as possible. Some knitters may find it easier to switch to larger needles. The floats are fairly long at the narrowest part of the Ks. In order to make this more manageable, trying carrying the CC along with the MC, at the back, after the 3rd or 4th knit stitch. This will reduce strain on the stitches without the CC showing through on the right side. For rounds 15 and 16, use a long piece of scrap yarn in CC for the continuation of the ladder rather than attempt to carry the CC across.

Work chart.



- = knit with MC
- = knit with CC

erqsome knits

Leaving a 6-inch tail, cut CC.

Next two rounds (MC): k all sts

hand and thumb gusset (right)

Note: the rest of the mitten is now worked with MC only.

round 1: k1, kfb, pm, p2, [p1, k1] to last 3 sts, pm, kfb, k2

round 2-3: k to m, slm, [p1, k1] to m, slm, k to end

hand and thumb gusset (left)

round 1: k2, kfb, pm, p2, [p1, k1] to last 2 sts, pm, kfb, k1

round 2-3: k to m, slm, [p1, k1] to m, slm, k to end

For both hands, repeat rounds 1-3 until there are 19 sts in total between the markers.

Next round: k to m, slm, work in pattern to m, slm, k to end

BO in pattern.

thumb strap

Pick up and knit the first 4 sts from thumb gusset on the palm-side of the mitten.

row 1 (RS): sl1, k3

row 2 (WS): sl1, p3

Repeat these two rows 28 times (or until 3 rows away from required strap length).

Next round (WS): p2tog, yo twice, p2tog

Next round (RS): k1, k first yo, p second yo, k1

Next round: k4

BO all sts

finishing

Weave in ends and block lightly, using a spray bottle to gently mist the mitts and then laying out to dry in shape.

Sew on a button that captures the K&K spirit and wear gadding about town on a myriad adventures.

abbreviations

CO = cast on

BO = bind off

MC = main colour

CC = contrasting colour

RS = right side

WS = wrong side

k = knit

p = purl

kztog = knit two stitches together

kfb = knit from and back into the same stitch

m = marker

sl = slip stitch purlwise

slm = slip marker

yo = yarn over

erqsome knits is Emma Haigh. She lives in London and is an avid Katia and Kyliemac listener. She writes at her blog, erqsome.typepad.com

This pattern is yours to use, but please don't distribute it without permission.

Questions and comments should be directed to erqsome@gmail.com